

AccuMarker BMH18, BMH50 and BMH120

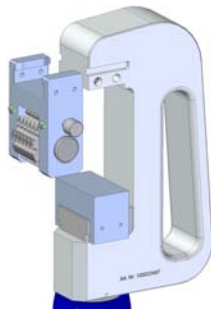
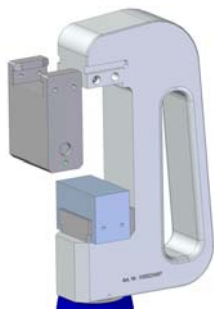
Technical data sheet

Application Area

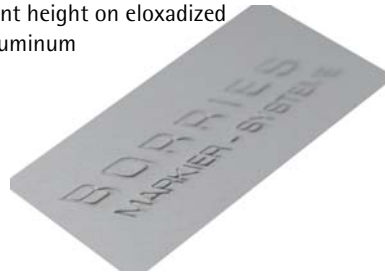
The electro-hydraulic AccuMarker is **easy to handle** and due to the accumulator it can be used **at mobile and quick applications** as well as **at places which are difficult to access**. The embossing head can rotate 330°. The multi-function illuminating diode indicates the maintenance and displays the accumulation control. Because of the modular design of the AccuMarker **different standard tools** are insertable at the top and the bottom of the C-frame. You need less time for the changeover as well as to change the figure combination. This flexibility makes it possible to use the AccuMarker almost everywhere.

Options

- Tools: type holder or a manual adjustable numbering head for changing (here for example for the AccuMarker BMH18)



Test marking with 3 mm font height on eloxadized aluminum



AccuMarker BMH18 with a numbering head

- You can reduce the opening width with distance pieces in 5 mm ranges.
- The numbering head and steel types can have a variable quantity of digits and a variable font height (FH 2, 3, 4 or 5 mm).

Auxiliary Equipment

- Plastics case
- Removable battery
- Battery charger

AccuMarker BMH50



Technical Data

	BMH18	BMH50	BMH120
• Marking power:	18 kN	50 kN	120 kN
• Distance:	ca. 7 mm	ca. 7 mm	ca. 15 mm
• Marking time:	1 - 3 sec depending on the distance	2 - 5 sec depending on the distance	3 - 6 sec depending on the distance
• Weight:	ca. 3.5 kg depending on the tool	ca. 4.5 kg depending on the tool	ca. 18 kg depending on the tool
• Opening width	30 mm	30 mm	60 mm
• Capacity of the accumulator:	3 Ah, 100 - 150 markings per accumulator charge		220 - 280 markings per accumulator charge
• Distance piece	in 5 mm ranges		
• Voltage:	12 V	18 V	12 V
• Accumulator charging time:	40 min		



AccuMarker BMH120 in a plastic case with equipment



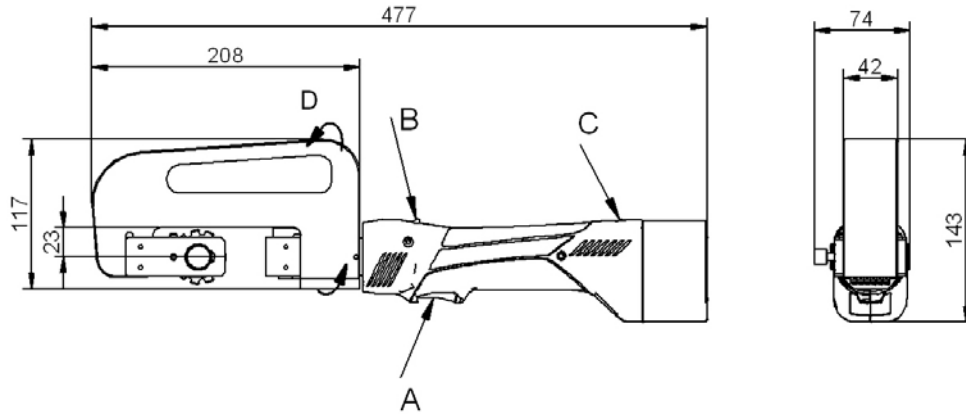
AccuMarker BMH120 with a numbering head and test marking

Technical details are subject to change.

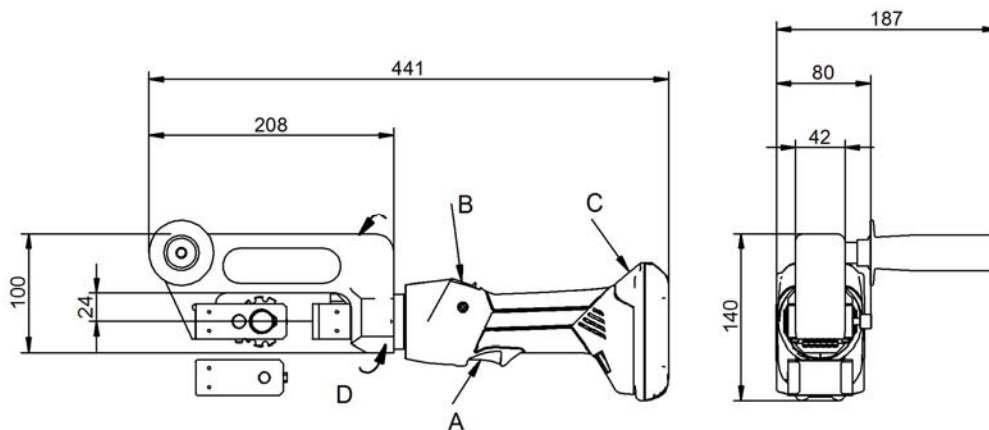
*) For a precise quantity of digits we need to do marking tests.

Drawings and Dimensions

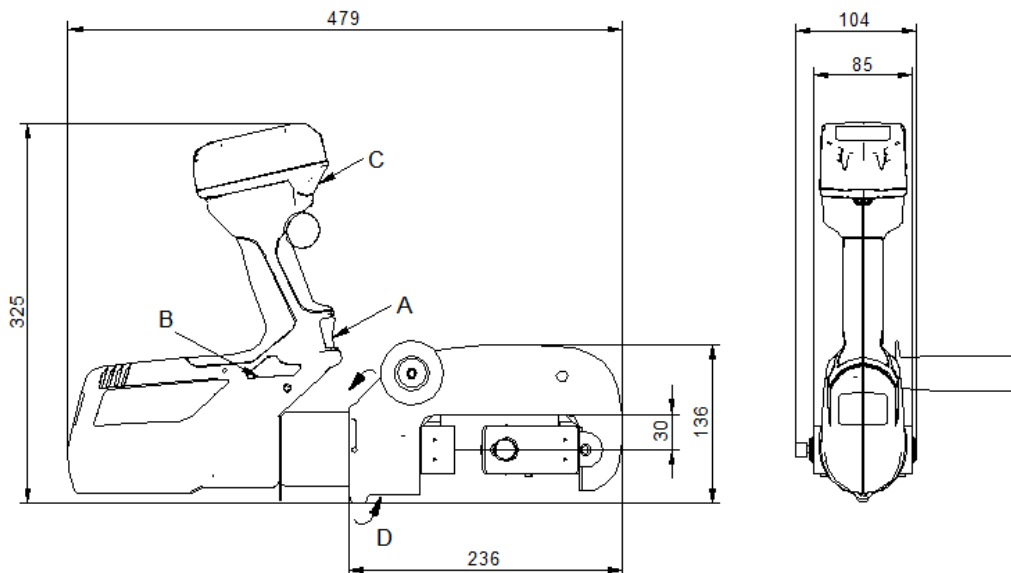
AccuMarker BMH18 (here with numbering head)



AccuMarker BMH50 (here with numbering head)

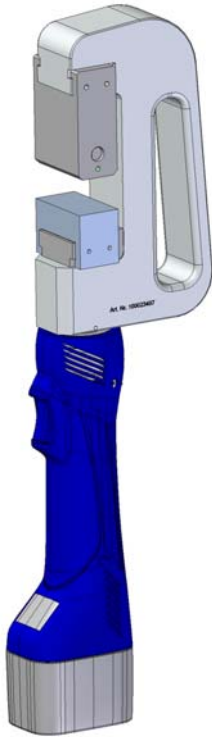


AccuMarker BMH120 (here with type holder)

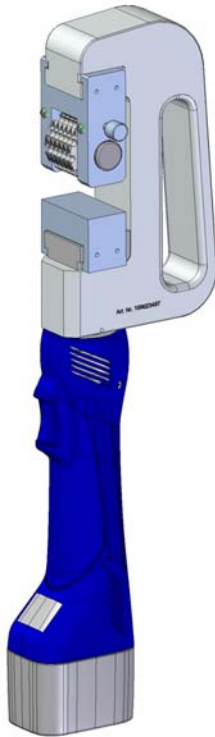


Pictures

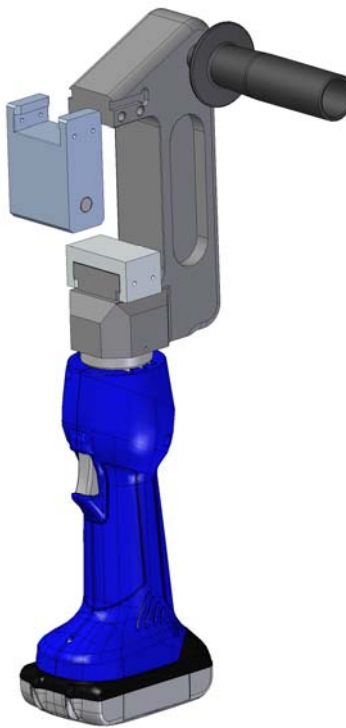
AccuMarker BMH18
with type holder



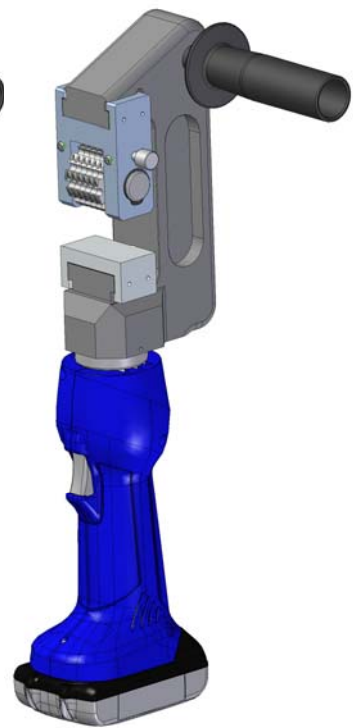
with numbering head



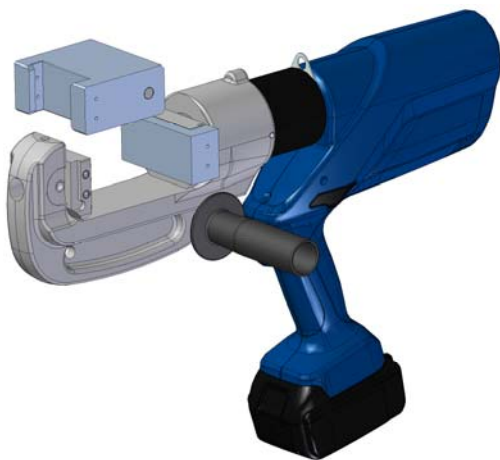
AccuMarker BMH50
with type holder



with numbering head



AccuMarker BMH120
with type holder



with numbering head

